

RXP WATER STORAGE

PROVEN QUALITY AND
PERFORMANCE



by aliaxis

**Whether you are storing,
transporting or distributing
water or wastewater,
RXP has the solution for
you, with manufacturing
facilities New Zealand wide
and selections of strong
supporting brands.**



OUR SOLUTIONS

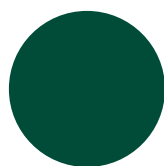
Consider your water storage sorted with RXP's tanks. Suitable for various agricultural, urban and industrial applications.

- Easy to install
- Compliant to the highest standard AS/NZS4766
- UV stabilised, food grade polyethylene (FDA approved)
- Resistant to algae growth
- Lab tested to ensure tank meets our strict guidelines
- Use of diagnostic tooling during manufacturer ensures heating and cooling cycles are optimised
- One piece construction for strong robust tanks
- Wide range of accessories
- NB: The size of our tanks in litres refers to actual amount of usable water that can be stored - that's guaranteed

Standard tank colours



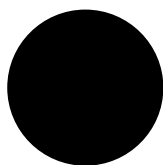
Mist
Green



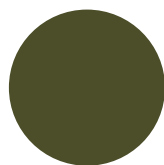
Heritage
Green



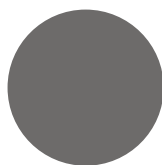
Beige



Black



Karaka
Green



Dark
Grey

Other colours available on request.

MAXTM TANKS

10,000^{ONLY North Island} | 15,000 | 25,000^{ONLY North Island}
26,000^{ONLY South Island} | 30,000 Litres

Features:

- 450mm lid for easy inspection (10,000 and 15,000 litres)
- 600mm lid for easy inspection (26,000 and 30,000 litres)
- Building permit not required for 30,000 litre tank
- 6 large lugs for lifting, carrying and tying down
- Flat panel for ballcock and accessories, and for ladder stability
- For water use 1SG only (1m³ = 1000kgs water)
- For use of potable water storage between 1 – 23 °C
- All tanks are supplied with a black vented lid
- 20 year warranty
- Two pre-drilled BSP fittings and supplied with 1 x 50mm hex nipple and 2 x 50mm bung

WATER TANKS

500 | 1,100 | 2,000
3,200 | 5,250 | 7,500 Litres

Features:

- 450mm lid for easy inspection
- 500 – 1,100 litre tanks have centre placement for manhole
- 2,000 – 7,500 litre tanks have outside edge placement for manhole
- Easy to fit outlets and valves
- 4 lugs for lifting, carrying and tying down
- For water use 1SG only (1m³ = 1000kgs water)
- For use of potable water storage between 1 – 23 °C
- Tanks are supplied without fittings or pre-drilled holes
- All tanks are supplied with a black vented lid
- 20 year warranty

These tanks can also be foamed (thick foamed centre between a polyethylene outer and inner skin).

- Provides extra strength
- Superior insulation properties
- Logical for temperature controlled environments
- Black only

WATER TANK RANGE



COLOSTRUM TANKS

500 | 1,100 | 2,000 | 3,200 | 5,250
7,500 | 10,000 Litres ONLY North Island

Colostrum tanks are made from strong robust opaque plastic.



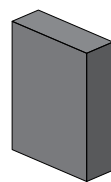
Features:

- Easy to transport with built in lifting lugs
- Ease of drilling for wide range of fittings
- 500 – 1100 litre tanks have centre placement for manhole
- 2000 – 7500 litre tanks have outside edge placement for manhole
- Clear stencil markings showing the volume in litres
- Four lugs for lifting, carrying and tying down
- All tanks are supplied with a lid
- Colostrum Zinc Coated Manual Stirrer (COLSTIRRER) is also available

MOLASSES TANKS

500 | 1,100 | 2,000 | 3,200 | 5,250
7,500 | 10,000 ONLY North Island | 15,000
25,000 ONLY North Island | 26,000 ONLY South Island |
30,000 Litres

Molasses tanks are specially made extra duty tanks for the storage of heavy molasses or similar liquids (1 litre molasses = 1.4kg). Molasses tanks are the same shape as a standard tank but with a thicker wall for holding heavy viscous liquids.



Molasses tank wall



Normal water tank wall



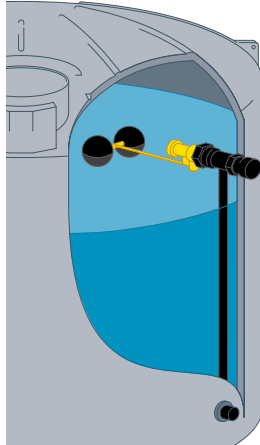
Features:

- 500 – 1,100 litre tanks have centre placement for manhole
- 2,000 – 30,000 litre tanks have outside edge placement for manhole
- Easy to transport with built in lifting lugs
- Thicker walls
- Molasses kits sold separately and fitted to molasses kits only. Small or large kit options available
- All tanks are supplied with a lid

TANK ACCESSORIES

Inlet kit for MAX™ Tanks

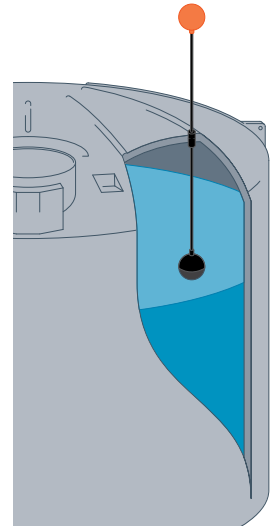
- 25mm and 50mm available
- Pre-installed
- Frost protection when required



Water Level Indicator

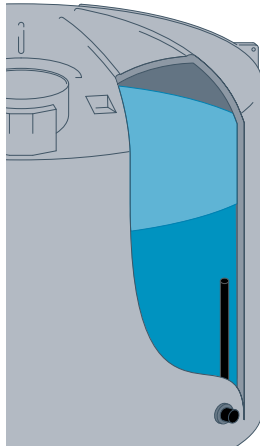
- Easy Installation
- Highly visible orange float
- Stainless steel shaft
- Sturdy plastic fittings

*Also available Reservoir Water Level Indicator



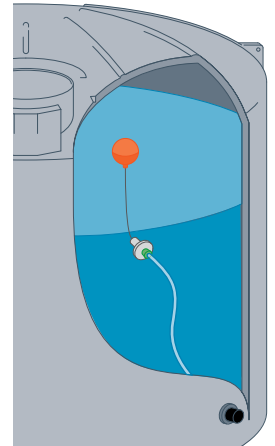
Fire/Water Reserve for MAX™ Tanks

- Ensures if there is a fire, firefighters can access water immediately



Floating Outlet

- Draws fresh water from top of tank
- Stops debris damaging the filter
- Easy installation



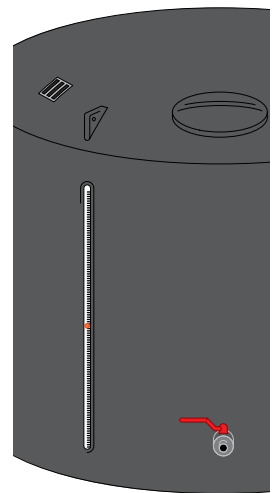
Fire Fighting Kit for MAX™ Tanks

- 75mm outlet with instantaneous coupling
- 100mm outlet with standard hose coupling



Molasses Kit

- Facilitates the supply of molasses
- Clear sight for easy visual of tank level





RXP

PO Box 360, Ashburton

P: 0800 288 558

E: customerservice@rxplastics.co.nz
rxplastics.co.nz

Version 072021